

Employment Programs



Photo by Harvey Levine



Photo by Catherine Cole

Our **50+ Employment Expos** in Fairfax County, Va. and Montgomery County, Md. were attended by 1900 people, and a record number of employers and resource organizations were there to assist them.

The top photo shows some of the many elected official and community leaders that joined job seekers and exhibitors at our Expo of April 15, 2019 in North Bethesda. The expo also was held in Northern Virginia (the bottom photo).

Our **Senior Community Service Employment Program** provided 44,267 community service hours through the work of 83 paid, on-the-job trainees who were age 55 or better and at or below 125 percent of the federal poverty line. We also paved the way for a new program that would prepare interested Program participants for insurance-industry jobs.

**The Career Gateway**, our multi-day workshops for older job seekers, served 95 mid-life and older job seekers, most of whom found jobs soon after graduating.

46TH ANNUAL REPORT

“ We are **dancing, singing** and **compassionate** caring at adult day centers. We are **champions** for the jobless, **grand masters** of senior transportation and bridge builders between generations. We are **mentors, collaborators** and **experts** on aging. Most of all, we are change agents who know that as we improve the lives of others, we improve ourselves. ”

David Gamse, Chief Executive Officer

Photo by Harvey Levine

Transportation

Our wheelchair-accessible **ElderBuses** traveled 181,282 miles while making 62,981 passenger trips.

**Connect-A-Ride** mobility specialists provided 5,557 referrals, assisted 1,616 callers, and met with 846 attendees at Ride Smart Travel Training, senior fairs, expos.

**VillageRides** helped 367 seniors and adults with disabilities get 5,061 one-way rides from 265 volunteer drivers through a network of 15 neighborhood villages in Montgomery and Prince George’s Counties, Md.

The Pozez Jewish Community Center of Northern Virginia helped 753 passengers get 12,244 rides from 477 volunteer drivers. Its **NV Rides** program is a partner with JCA in our Volunteer Driving Network of Greater D.C.

Our **Escorted Transportation Program** provided 508 rides to 395 seniors who needed door-through-door assistance.



Photo by Suzanne Pollak of JCA

GOLD SPONSOR

OFFICE SOLUTIONS

Leading Innovation

Gary Sockel  
President

COPIERS | PRINTERS | PRODUCTION PRESSES  
MANAGED PRINT | MANAGED NETWORK | SECURITY SYSTEMS

15878 Gaither Drive  
Gaithersburg, MD 20877  
www.nauticon.com

240-388-1200 (cell)  
301-279-0123 (office)  
gsocket@nauticon.com

BRONZE SPONSOR

WillisTowersWatson

Jewish Council for the Aging®  
of Greater Washington  
12320 Parklawn Drive, Rockville, MD 20852  
Email: Information@AccessJCA.org  
Phone: 301.255.4200 or 703.425.0999  
Fax: 301.231.9360, TDD: 301.881.5263  
www.AccessJCA.org

SILVER SPONSORS

Morgan Stanley

Ronald L. Fishbein  
Investment Management Consultant  
Managing Director – Wealth Management  
Financial Advisor  
702 King Farm Blvd, Suite 500  
Rockville, MD, 20850  
+1 301 556-2340  
ronald.l.fishbein@ms.com  
NMLS# 1253246

© 2019 Morgan Stanley Smith Barney LLC. Member SIPC. csc.020308 08/19

CongressionalBank

Ross Berman  
VICE PRESIDENT  
COMMERCIAL LENDING

6701 Democracy Boulevard, Suite 400  
Bethesda, MD 20817  
240-380-1254 Direct 240-380-1354 Fax  
rbberman@congressionalbank.com

Partner Agency of  
The Jewish Federation  
OF GREATER WASHINGTON

PROUD MEMBER OF  
United Way  
of the National Capital Area

52847

In Our 46th Year...



Photo by Harvey Levine

- We presented award-winning actor Louis Gossett Jr., shown at left, with the 26th Annual **Sylvia Blajwas Productive Aging Award**, and we honored the Samuel and Grace Gorlitz Foundation with our Humanitarian Award of 2019. Rabbi Jack Luxemburg and Board Member Barbara Etkind chaired the award dinner, which welcomed 400.
- We grew from two to three **Gorlitz Kensington Clubs**. Now these social day programs for older adults with early-stage memory loss are serving even more members and the members are attending more frequently.
- The **Heyman Interages® Center** added three programs — a Job/Career Readiness Mentoring program, an intergenerational book club and an intergenerational walking club.



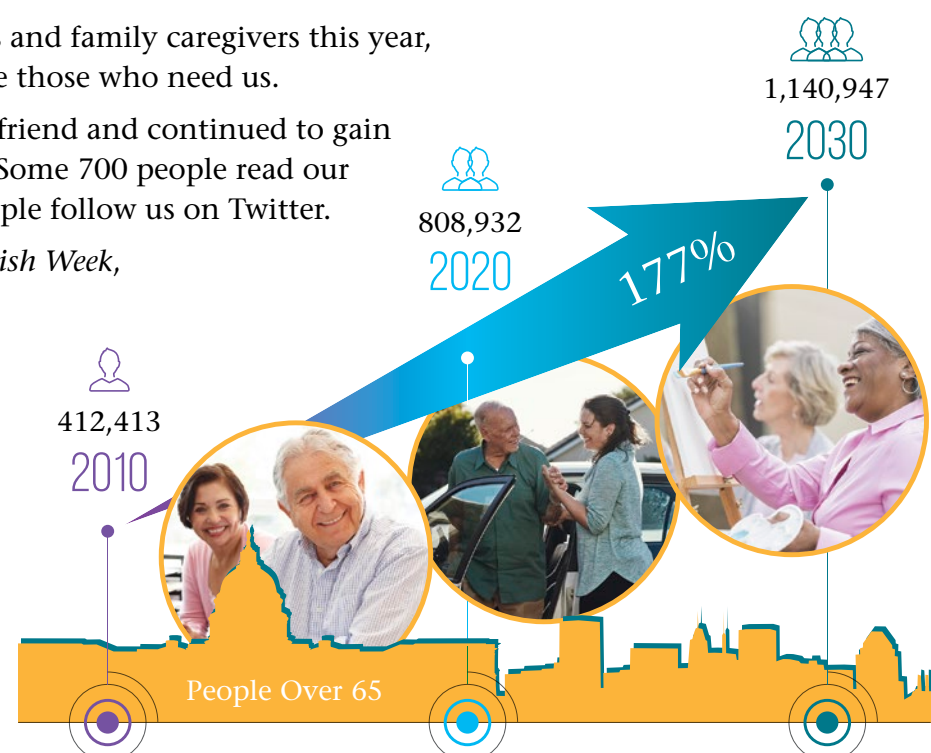
Strength in Numbers

We helped nearly 31,000 older adults and family caregivers this year, and we will continue to grow to serve those who need us.

We welcomed our 5,200th Facebook friend and continued to gain supporters on Twitter and LinkedIn. Some 700 people read our LinkedIn posts regularly and 400 people follow us on Twitter.

In collaboration with *Washington Jewish Week*, we reached thousands of older adults and family caregivers with **five Senior Resources Guides** covering such topics as vacations, Medicare and the gig economy.

The population of older adults in the Washington, DC region will increase **177 percent** between 2010 and 2030.



President’s Message

We live in a dynamic period of constant change that includes a rapidly increasing senior population. As Rabbi Jonathan Sacks said, “We are as great as the challenges we have the courage to undertake.”

While enhancing our broad range of exemplary programs to meet the needs of our diverse senior constituency, **we have adopted an ambitious strategic plan that will enable JCA to be on the cutting edge of making the National Capital Region a great place for all of us to age with dignity, independence and vitality.** But more than that, we are engaged in a thoughtful evaluation and planning effort to ensure the long-term viability of JCA and its ability to adapt to the evolving needs of our seniors.

We are assessing the fiscal performance of each JCA program while launching a study on ways to control the soaring costs of transporting vulnerable clients with cognitive incapacity.

We are studying and testing ways to diversify and grow our funding sources, so, in addition to expanding our major gift solicitation and donor stewardship to JCA.

We are broadening JCA’s profile by nurturing and expanding our base of more 1,300 volunteers, as well as refining a succession plan for our volunteer Board.

With your help we can do even more to meet our challenges. For our complete Strategic Plan, see the Mission and Values page of [www.AccessJCA.org](http://www.AccessJCA.org).

Thank you for your support!

Norman Goldstein  
PRESIDENT

Adult Day Programs

Mary Beckel, shown at right, attends our Thome Kensington Club in Germantown two days a week. Mary is one of 88 seniors who learn, exercise and socialize at our three Kensington Clubs in Montgomery County, Md. — a program that since 2008 has been helping people in the early stages of diagnosed memory loss. In her younger years, Mary loved being a nurse and raising nine children. Now she is happy enjoying her grandchildren, great grandchildren and “KC” friends.

Our Misler Adult Day Center in Rockville, Md. provided compassionate care to 70 participants with physical, cognitive or emotional challenges.



Photo by Suzanne Pollak of JCA



Intergenerational Programs



Photo by Leah Bradley of JCA

**The Heyman Interages Center** connected 596 youth volunteers with 1,238 men and women in senior facilities and adult day centers. Our 293 older volunteers mentored and tutored 4,141 low-income students, and our 27 diverse programs won numerous awards. The cover photo by Harvey Levine shows Vivien Hsueh, an officer or the JCA Board, and Sunny Ye entertaining young and old at our annual, intergenerational Senior Prom. The attendees danced, too! Overall, Interages’ volunteers donated 7,725 volunteer hours of care.

JCA Bus Drivers Take Care of Us

Robert Washington is one of JCA’s 16 bus drivers, and proud of it. He begins his day early and with a smile, getting to the White Oak Senior Center in Silver Spring, Md. by 7:30 a.m. He spends the next two hours picking up seniors on his two routes and then dropping them off for a day filled with socializing, exercising, learning and game playing. Several hours later, he takes his riders home again. Both Robert and his passengers have established a routine, making the ride as safe and pleasant as possible. Once they are seated with seat belts fastened, they yell out, “Okay, I’m ready, Robert” so he knows that it is safe to start driving again. “I’ve been coming for six years, three days a week,” says Cecile. “I really enjoy being out. I think it’s nice we have this bus.” If not, she declares, “I’d be home just watching television.” Karen Maxin, acting director and recreational coordinator of the Margaret Schweinhaut Senior Center, also in Silver Spring, helps praise on the JCA Elderbus. “It absolutely helps,” she said, noting that many have no other form of transportation.

Since January 2014, JCA has been helping scores of older passengers travel safely to and from five Montgomery County senior centers, where they participate in a wide range of recreational activities and benefit from important health services. Through a contract with the Montgomery County Department of Recreation, our Senior Center Shuttle transports seniors four days a week who live within a five-mile radius of each center. Maxin put in a good word about our drivers, too. A few senior center participants receive food packages from Manna Food Center, a local nonprofit that works to end hunger. The JCA bus driver always helps his passengers get all their full-to-the brim grocery bags onto the bus while providing some extra TLC to one man who uses a walker and has trouble carrying his belongings. “The bus driver takes them for him. He helps him on. He is so kind,” she says.

Taking seniors to their activities is just one thing our buses do. JCA also has a contract with the Montgomery County Department of Transportation to provide bus service to and from Tobytown, an historic African-American community near Potomac. The route began in November of 2016, connecting residents with such places as Shady Grove Hospital, Wootton High School and the Rockville Metro.



Photo by Suzanne Pollak of JCA

“It makes me proud when the County chooses us to serve people of all faiths and from all walks of life,” said Moti Galil, who has been a cornerstone of the JCA Rose & Harold Kramer Center on Transportation since 1981. He directs our 15 buses as if he were conducting an orchestra, supported by transportation coordinator Evelyn Kittrell and compassionate drivers like Robert. “We drive precious cargo every day,” said Moti. “We connect older people to senior centers, to JCA's own adult day centers and more... We connect older people to the community they cherish.”

Lay Leaders

**EXECUTIVE COMMITTEE OF THE BOARD**  
*with terms expiring at the Annual Meeting of October 17, 2019*  
**President** Norman Goldstein  
**1st Vice President** Kenneth Simonson  
**2nd Vice President** Marion Kristal Goldberg  
**3rd Vice President** Daniel Hodin  
**Secretary** Nancy Fiedelman  
**Assistant Secretary** Vivien Hsueh  
**Treasurer** Barry Hartzberg  
**Assistant Treasurer** Jeffrey Lipson  
**Parliamentarian** Howard Gleckman  
**Member-at-Large** Phyllis Coburn

**EXECUTIVE COMMITTEE OF THE BOARD**  
*with terms expiring at the Annual Meeting of 2020*  
**President** Norman Goldstein  
**1st Vice President** Howard Gleckman  
**2nd Vice President** Marion Kristal Goldberg  
**3rd Vice President** Larry Joseph  
**Secretary** Vivien Hsueh  
**Assistant Secretary** Elinor Ginzler  
**Treasurer** Kenneth Simonson  
**Assistant Treasurer** Scot Farrell  
**Parliamentarian** Nancy Fiedelman  
**Members-at-Large** Marc Berman and Melvin Stern

**BOARD OF DIRECTORS**  
*CLASS OF 2019 with terms expiring at the Annual Meeting of October 17, 2019*  
Ira Bartfield  
Marc Berman  
Lorna Forde  
Donna Phillips Mason  
Susan Miller  
Maricé Morales

*CLASS OF 2020 with terms expiring at the Annual Meeting 2020*  
Barbara Etkind  
Lynn Friss Feinberg  
Debra Liverpool  
Herbert Mintz  
Ronald Paul  
Melvin Stern, *Presidential Appointee*  
Howard Wilchins, *Presidential Appointee*  
Gregory Wims

*CLASS OF 2021 with terms expiring at the Annual Meeting of 2021*  
Marc Berman  
Ronna Borenstein-Levy  
Phyllis Coburn  
Richard Galen  
Jay Goldman  
Debra Korth

*CLASS OF 2022 with terms expiring at the Annual Meeting of 2022*  
Ira Bartfield  
Sol Glasner  
Daniel Hodin  
Jeffrey Lipson  
John Shuchart  
Vickie Witkin

*TRUSTEES with terms expiring at the Annual Meeting of October 17, 2019. Life Members of the Board also serve as Trustees as do Past Presidents, except for the two most recent Past Presidents, who serve as voting members of the Board.*  
Philip Baker  
Fredric Cantor  
Sherman Cohn  
Edward Cooper  
Lynne D. Filderman  
Susan Finkelstein  
Irwin Goldbloom  
Karen Keats  
Neal Kursban  
Gerald Levine  
Adrienne Mandel  
James McMann  
Barry Nudelman

Susan Berla Perry  
Stephen Rockower  
Marvin Rosenberg  
Rabbi Matthew Simon

*TRUSTEES with terms expiring at the Annual Meeting of 2020*  
Philip Baker  
Fredric Cantor  
Sherman Cohn  
Edward Cooper  
Susan Finkelstein  
Lorna Forde  
Irwin Goldbloom  
Barry Hartzberg  
Karen Keats  
Neal Kursban  
Gerald Levine  
Adrienne Mandel  
Donna Phillips Mason  
Susan Miller  
Maricé Morales  
Barry Nudelman  
Susan Berla Perry  
Stephen Rockower  
Marvin Rosenberg  
Linda Rosenzweig  
Rabbi Mathew Simon

**PAST PRESIDENTS**  
George Hurwitz\*, 1973–1975  
Julius Sankin\*, 1975–1978  
Rosalie B. Gerber\*, 1978–1980  
Saul I. Stern\*, 1980–1982  
Sidney Z. Mensh\*, 1982–1984  
Samuel J. Gorlitz\*, 1984–1986  
William Goldwater\*, 1986–1988  
Irvin “Bud” Lavine\*, 1988–1990  
Lawrence L. Levin, 1990  
Stella M. Bernstein\*, 1990–1992  
Sylvia Raphael, 1992–1994  
Win Greenwald, 1994–1996  
Sally M. Herman, 1996–1998  
Judith S. Ball, 1998–2000  
Michael Goldberg, 2000–2002  
Elaine Kotell Binder, 2002–2004  
Richard Dine, 2004–2006  
Ed Bonder, 2006–2008  
Linda Kaplan, 2008–2010  
Barbara “Bobbe” Mintz, 2010–2012  
Samuel G. Kaplan, 2012–2014  
Sheldon Grosberg\*, 2014–2016  
Natalie Cantor, 2016–2018  
**LIFE MEMBERS OF THE BOARD**  
Toby Alterman\*  
Maurice “Maury” Atkin\*

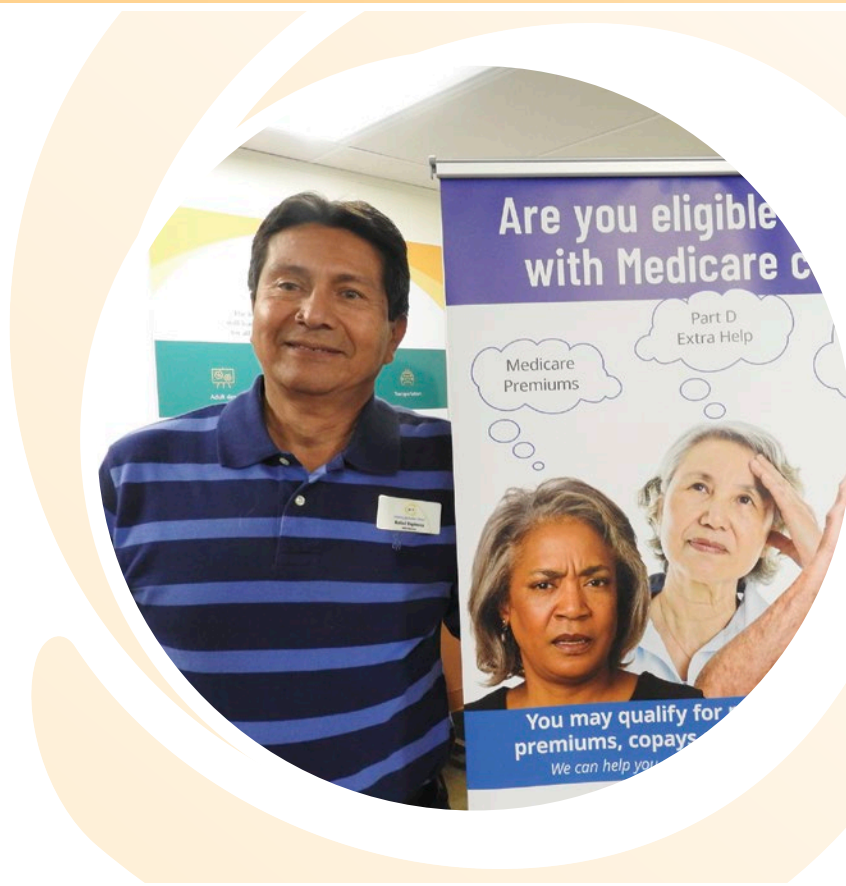
Wayne Berman  
Anne Bord\*  
David Brooks\*  
Elizabeth Cantor\*  
Mollie Caplan\*  
Anne Gelfand\*  
Howard Katzman\*  
Jack Kay\*  
Joan Jolles Kline  
Sidney Kramer  
Bess B. Lavine  
Edward R. Levin  
Sonia Atlas Levin\*  
Laurence Levitan  
Laurel Barron Mendelsohn  
Howard Polinger\*  
Irma Poretsky  
Lester Poretsky\*  
Anne S. Reich\*  
Sherry Rodman\*  
Jimmie Shapiro  
Kenneth Simonson (*concurrently serving as an Officer of the Board*)  
Kitty Strauss\*  
Harvey Wertlieb\*  
Kathleen Wiseman

**EXECUTIVE DIRECTOR EMERITUS**  
Ruth Breslow-Young\*  
**KEY VOLUNTEER ADVISERS**  
**BYLAWS & ETHICS COUNSEL**  
Marion Kristal Goldberg, Goldberg & Goldberg PLLC, Washington, DC  
**GENERAL COUNSEL**  
Kenneth Jacob, Arent Fox LLP, Washington, DC  
**MEDICAL DIRECTOR**  
Susan Miller, M.D., Bethesda, Md.  
**OWNER’S REPRESENTATIVE AND CONSTRUCTION MANAGER, ANN L. BRONFMAN CENTER**  
Terry Korth, The Korth Companies, Inc., Gaithersburg, Md.  
**PERSONNEL POLICIES COUNSEL**  
Edward R. Levin, Saul Ewing Arnstein & Lehr LLP, Washington, DC  
**RETIREMENT PLAN COUNSEL**  
Linda Rosenzweig, Keightley & Ashner LLP, Washington, DC

\* of blessed memory

Information Services

**SHIP**, our State Health Insurance Assistance Program of Montgomery County, answered 3,079 calls. Its 22 volunteers and two staff made 68 Medicare presentations and attended 35 outreach events while investing 2,451 hours counseling people on Medicare options. In addition, SHIP helped 179 clients save an average of \$1,888 each through free prescription drug analyses. The volunteers and staff of the **Rose Benté Lee Senior HelpLine** and **Steven M. Reich HomeCare Resource Center** responded to 400 inquiries, providing more than 1,200 referrals for housing, caregiving, social programs, medical equipment and more. Pictured at right is **Rafael Espinoza**, director of SHIP.



Our Senior Staff

**David Gamse**  
Chief Executive Officer  
**Micki Gordon**  
Assistant CEO and Senior Director of Development  
**Kevin Feltz**  
Senior Director of Finance and Administration  
**Leah Bradley**  
Senior Director of the Heyman® Interages Center  
**Sara Fought**  
Senior Director of the Center for Information Services  
**Debbie Sokobin**  
Acting Senior Director of the Cahnmann Center for Supportive Services and its Misler Adult Day Center

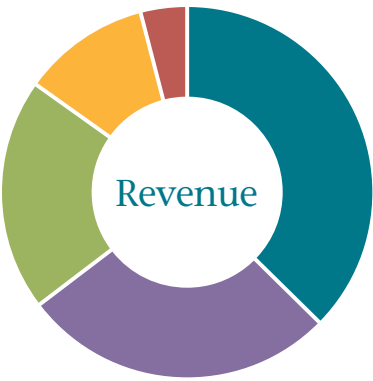
Award Winners

JCA could never accomplish all the good we do without help. In 2018, we delighted in honoring three of many heroes. **Maria Hernandez**, JCA Office and Operations Administrator (pictured here) began her “JCA life” as a participant of our Senior Community Service Employment Program. Excelling there, she joined our management staff. We presented Maria our 2018 Ruth Breslow-Young Staff Award of Excellence to honor her dedicated service. **Vickie Witkin** received the JCA Jacqueline Unger Community Service Award of 2018 in recognition of the extraordinary volunteer support she provided JCA Interages, The Career Gateway and our 50+ Employment Expo. **Patricia Rohrer**, long-term care program manager with the Health Department of Fairfax County, Va., received our Advocate for the Aging Award and our gratitude for being such a wonderful program partner.



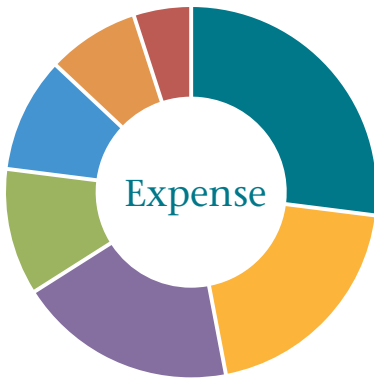
Photo by Harvey Levine

Financial Highlights



- 37% Grants (2,375,231)
- 27% Program Fees (1,721,297)
- 20% Philanthropic Support (1,284,644)
- 11% Volunteer Support (709,924)
- 4% Rent and Investments (258,208)

Total: \$6,349,304



- 27% Transportation Programs (1,679,930)
- 20% Senior Employment (1,244,797)
- 19% Adult Day Programs (1,165,877)
- 11% Intergenerational Programs (680,170)
- 10% Management & General (647,014)
- 8% Information Education Outreach (523,874)
- 5% Fundraising (293,027)

Total: \$6,234,692

*The data here are preliminary estimates for Fiscal Year 2019, from July 1, 2018 through June 30, 2019, and are unaudited. See our audited financial statement for a full accounting presented according to Generally Accepted Accounting Principles. Percentages are rounded to the nearest whole percentage points.*